



## **NWH Research and Knowledge Exchange**

Institutional development - Regional impact – Global connection

### **Quarterly Report:**

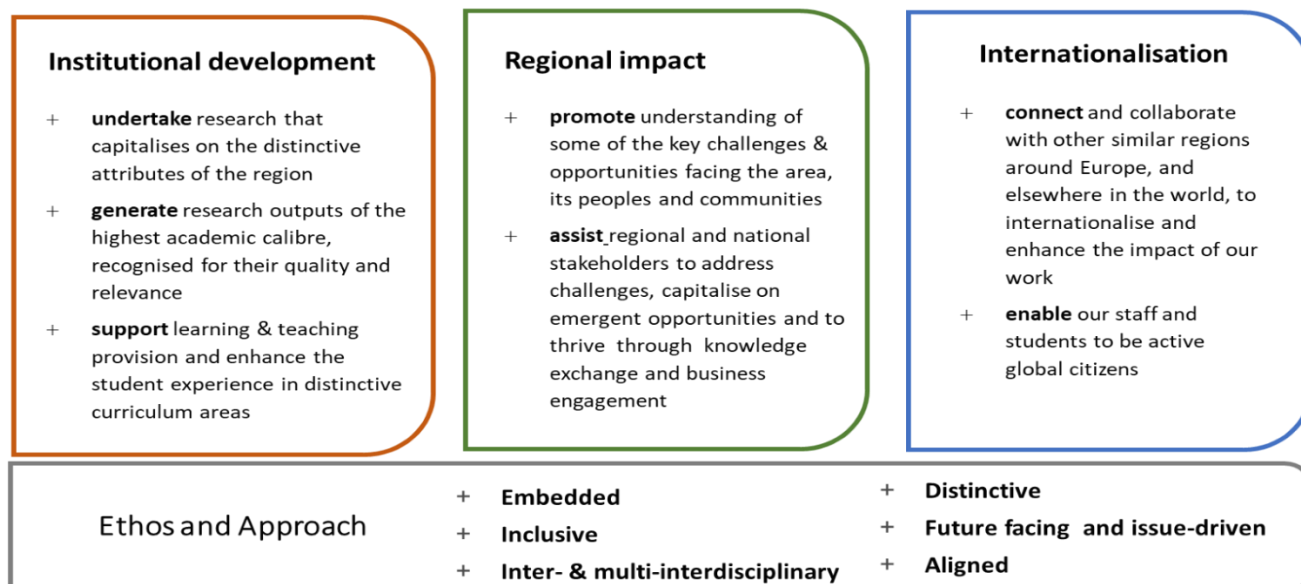
December 2024 – February 2025

# CONTENTS

Introduction .....	3
Activity Reports.....	4
<b>Theme</b> .....	4
• Energy.....	4
• Pollution .....	5
• Peatlands.....	6
• Tourism.....	7
• Society .....	7
• Education.....	8
• Other .....	8
Outputs .....	9
• Peer-reviewed publications .....	9
• Book chapters.....	10
• Conference/event presentations .....	10
• Media coverage.....	11
Staff and PGR Students .....	12
• Staffing .....	12
• Postgraduate Students (to be updated by Directors of Studies).....	13
• Visiting staff and placement students.....	14
Research and KE funding applications .....	14

## Research and Knowledge Exchange

### Aims and objectives



# INTRODUCTION

---

The NWH Research and Knowledge Exchange Quarterly Report provides an update on Research and KE activity across NWH. It is not intended to be comprehensive; but rather give a representative picture of the range and diversity of research and knowledge exchange being undertaken across the institution while highlighting initiatives, outputs and impacts where appropriate.

To ensure consistency and to mitigate excessive reporting burden, the same report is circulated to a number of groups and interested parties i.e., to act as a 'single point of truth' that can be used and shared with confidence.

The report will be circulated to:

- NWH Research and Knowledge Exchange Staff
- NWH Communication team
- NWH Executive
- NWH Highland Board of Management
- UHI Dean of Research and Knowledge Exchange

Certain sections of the report are relevant to particular Committees of the NWH Highland Board of Management.

These are as follows:

- Finance and General purposes Committee – Activity Reports and Outputs
- Learning Teaching and Research Committee -

The report is produced on a quarterly basis according to the following schedule:

<b>Period covered</b>	<b>Circulation</b>
September to November	December
December – February	March
March - May	June
June – August	September

## ACTIVITY REPORTS

Theme	<ul style="list-style-type: none"> <li>• Energy</li> </ul>
Highlights	<ul style="list-style-type: none"> <li>• Stephanie Strother, Christine Anderson and Nicholas Petzinna attended and presented <b>UHI Energy Innovation</b> activities at the UHI Research Conference in January 2025. Several applications to the Challenge Fund were received from across UHI and are currently in review.</li> <li>• Christine Anderson hosted the first quarterly meeting of the <b>UHI Net Zero Hub</b> in February 2025.</li> <li>• Benjamin Williamson received funding for a new programme of research to advance monitoring of the environmental interactions of wave and tidal-stream energy, including partnerships in the UK, USA and Canada. Total Value £320k was awarded for a 3-year Knowledge Transfer Partnership (<b>KTP</b>) with the European Marine Energy Centre (EMEC), and £122k (total value) awarded for a 12-month project with <b>Orbital Marine Power</b> and the EPSRC Supergen Offshore Renewable Energy Hub on 'Validating environmental monitoring systems for floating tidal stream turbines'.</li> <li>• Benjamin Williamson presented a webinar hosted by the <b>Offshore Renewable Energy Catapult</b> to &gt;150 attendees on The Future of Environmental Monitoring in February 2025.</li> <li>• Benjamin Williamson contributed through UHI as partner to a £5.6m proposal to the Value of Marine Artificial Structures (<b>ValMAS</b>) funding call. The project will enhance understanding of the ecological, economic and social value of marine artificial structures' natural capital to inform decision making and policy solutions for management for all life stages.</li> </ul>
Current major projects/initiatives (select; with partners + funders) - examples	<ul style="list-style-type: none"> <li>• Research into physics-to-ecosystem level effects of offshore wind in the <b>PELAGIO</b> and <b>PREDICT</b> projects was presented at the Scottish Marine Energy Research (ScotMER) Annual Symposium in February 2025.</li> <li>• Analysis of multi-year active acoustic and oceanographic data collected from seabed landers at the SSE Seagreen offshore wind farm is ongoing as part of the <b>PELAGIO</b> project, which investigates prey availability and ecosystem responses to offshore wind energy development.</li> <li>• Analysis from the multi-year passive acoustic array recovered from the Hywind Scotland floating windfarm is continuing as part of the <b>IFLOW</b> project investigating effects of floating offshore wind on fish and marine mammals.</li> <li>• A new partnership with <b>Sonardyne</b> is analysing data from the successful 'Origin' mooring deployment in the North Sea in 2024, with initial results showing a step-change advancing imaging resolution of fish schools, zooplankton layers, diving seabirds, stratification and internal waves. An abstract has been submitted to the 2025 Coasts &amp; Ports conference in Adelaide, Australia.</li> <li>• The new £2.93m (total value) <b>EQUIFY</b> project 'Establishing a Framework for Quantifiable Evidence and Impact of Ecosystem Change Throughout the Lifecycle of UK Floating Offshore Wind Farms' has started, including the kick-off and 2025 cruise planning meeting, targeting the first ambitious multi-ship, glider and mooring measurement campaign around Kincardine floating offshore wind farm in summer 2025.</li> <li>• The second stage of the <b>Energy Catalyst</b> project with INGEN Wave Energy Systems continues, towards the open-water demonstration of the wave energy converter in Indonesia.</li> <li>• The <b>KTP</b> with Ocean Science Consulting to develop new integrated system for marine mammal mitigation from offshore developments is in the final stages, concluding at the end of March 2025.</li> </ul>

Theme	<ul style="list-style-type: none"> <li>● Pollution</li> </ul>
Highlights	
<ul style="list-style-type: none"> <li>• Anna McWilliam completed her PhD project field and laboratory work. Anna has been successful in securing an STSM (Short Term Scientific Mission) within the <b>SafeGameMeat EU COST action</b>. Anna will pause her PhD to work at Aarhus University in Denmark to undertake a literature review of contaminants in European game meat (with Dr Niels Kanstrup).</li> <li>• Szabolcs Pap submitted his £2.3M (total value) 5-year <b>“EPSRC Fellowship”</b> to the UKRI, entitled “Chasing sustainability and net zero in the water sector: Processing biosolids into biochar (CassioPeia)” in December 2024. A 10-year version of the same proposal was also submitted to Royal Academy of Engineering.</li> <li>• Maria Lach-Gar started a <b>6-month internship</b> within the Pollution group - on the 10<sup>th</sup> of February - working on the CO-OP CIF2 project with Szabolcs Pap.</li> <li>• Mark Taggart and Szabolcs Pap won an <b>Interface Innovation Voucher</b> to work with Russwood Ltd on “Process innovation to treat challenging wastewater from the wood coatings sector”. The project will explore and develop improved water treatment processes for the company.</li> <li>• Szabolcs Pap with Darlene Russell obtained support to undertake the “Skillfluence about <b>Research Commercialisation</b>” programme – and this will run alongside applications by Szabolcs Pap for the ‘UHI Business Competition’ and ‘UHI Student and Staff Enterprise Competition’. These will build towards the possibility of <b>‘spinning-out’ a company</b> which will provide modular water treatment/nutrient recovery solutions.</li> <li>• Neil James, Elizabeth Masden, and Steph Griffiths have been working with researchers from the British Trust for Ornithology (BTO) to develop a long-term study site in Orkney. This research aims to investigate the <b>incorporation of plastics into Great cormorant (<i>Phalacrocorax carbo</i>) nests</b>, furthering understanding of marine plastic pollution impacts on seabirds.</li> <li>• <b>Ilgaz Cakin’s</b> minor corrections for his PhD were accepted and his PhD conferred.</li> </ul>	
Current major projects initiatives (select; with partners + funders) – examples	
<ul style="list-style-type: none"> <li>• The <b>CO-OP CIF2 project with SAMS and SRUC</b> continues. ERI is currently developing new composite materials using a mix of biochar and shell waste – for use in P adsorption – and then subsequent application on land (as fertiliser). These new materials will be tested at SRUC in coming months.</li> <li>• <b>Pb ammunition and the SHOT-SWITCH</b> project (with University of Cambridge, RSPB, Wild Justice): Two new papers have emerged looking at grouse and pheasant entering the human food chain, almost all of which are still being shot with Pb – despite this being year 5 of a ‘voluntary’ transition away from Pb by the sector. The UK Government is due to decide whether a ban is now needed – on March 13<sup>th</sup> 2025.</li> <li>• Lydia Niemi and Mark Taggart received KE Challenge funding to support a cross-UHI partnership with social science/creative practice/humanities researchers and entrepreneurial experts at the UHI Centre for Living Sustainably, UHI NWH and UHI EO to develop the <b>“Culture Vultures”</b> partnership investigating the social and cultural impacts of vulture declines and reintroductions in Nepal.</li> <li>• Multiple ongoing commercial <b>water quality</b> contracts continue with partners including RSPB, SSE Renewables, Waterside Ecology, Dounreay/DSRL and Celtic Renewables.</li> </ul>	

Theme	<ul style="list-style-type: none"> <li>● Peatlands</li> </ul>
Highlights	
<ul style="list-style-type: none"> <li>• UHI NWH (Outer Hebrides) has received a £20,000 contribution from Comhairle nan Eilean Siar (Western Isle’s council) through the UKRI Net Zero Living: Fast Followers programme, to develop an updated <b>Western Isles Peatland condition map</b> to help better constrain the GHG emissions from LULUCF on the Outer Hebrides. The project is a collaboration between UHI NWH, James Hutton Institute, and Peatland Action.</li> <li>• UHI NWH (ERI) has secured funding for a new KTP project (total value: £242,000) with RWE to develop <b>responsible re-use of excavated peat</b> in the context of onshore wind development and associated peatland restoration activities. A KTP Associate will be recruited to deliver the project over a period of 2 years, working on a range of sites in Caithness.</li> <li>• UHI NWH (ERI) has secured a new collaboration (total value: ~£300K) with Total Energies R&amp;D Nature Base Solution team to develop applications of geophysics techniques to support <b>improved peatland mapping and management</b>. The two-year project will start as soon as contractual agreements are finalised.</li> <li>• Roxane Andersen delivered opening speeches at “When Fish Begin to Crawl” in Lyth Art, then at the world premiere orchestral performance in Inverness and at Glasgow Celtic Connection as part of the <b>Flow Country World Heritage Site Celebrations</b>.</li> <li>• Roxane Andersen with support from Jacqui Barclay, delivered the second “for Peat’s Sake” <b>contractor short course</b> in December 2024.</li> </ul>	
Current major projects initiatives (select; with partners + funders) – examples	
<ul style="list-style-type: none"> <li>• <b>Leverhulme Leadership Award (ERI-led)</b> The project enters the final 9 months with all PhD students and post-docs busy with write up. Mascha, Liam and Heather have set up the final big experiment on Sphagnum drought stress.</li> <li>• NatureScot “Bog Breathing project”: the first of four reports is finally published: NatureScot Research Report 1344 - Use of satellite measures of surface motion to improve the assessment of peat landslide susceptibility</li> <li>• <b>MOTHERSHIP</b> (JHI led, ERI and UHI Outer Hebrides involved as partners): the teams continue to support day-to-day maintenance and data download of Eddy Flux towers, and contribute to various project meetings and draft publications.</li> <li>• Roxane Andersen is awaiting outcome of 2 <i>Pushing the Frontiers</i> proposal submitted to UKRI. The first proposal was above funding threshold and is awaiting budget confirmation from NERC, the other was submitted in January for an outcome in September 2025.</li> <li>• Mascha Bischoff and Liam Godwin are developing projects for funding through the <b>Peatland ACTION</b> monitoring programme with external agencies.</li> </ul>	

Theme	● Tourism
Highlights	
<ul style="list-style-type: none"> <li>Steve Taylor secured £5000 of match funding from <b>Inverness City Heritage Trust</b> to co-finance a project celebrating the life and work of Charles Fraser-Mackintosh. Applications to Heritage Lottery Fund and Bòrd na Gàidhlig have been submitted for further co-financing.</li> <li>Kendra Turnbull completed a three-month project, funded through the Tourism KE Challenge Fund, investigating different types of <b>AI translation technology</b> and considering which tourism services could benefit from their application.</li> <li>An Innovation Voucher was successfully applied for by <b>Kendra Turnbull</b>, to work with Nether Lochaber Community Association (NLCA) to develop a suite of innovative tourism products, to support local tourism, safeguard heritage and to put Nether Lochaber 'on the map'.</li> <li><b>Steve Taylor</b> has started a new role as <b>external examiner</b> for a Masters in Regenerative Tourism at Munster Technological University, Ireland.</li> </ul>	
Current major projects initiatives (select; with partners + funders) – examples	
<ul style="list-style-type: none"> <li>An <b>international networking project</b> involving tourism researchers from Sweden, Finland, Spain, Netherlands and the UK (including Steve Taylor) has started, with the aim of producing policy papers, academic journal articles and a major transnational funding application.</li> </ul>	

Theme	● Society
Highlights	
<ul style="list-style-type: none"> <li>Lydia Niemi and Stuart Gibb undertook a visit to Uppsala University under the “Bridging Waters” project funded by the <b>Scottish Government’s Education Exchange</b> programme to develop collaborative research and KE activity in One Health, pharmaceutical pollution and sustainable healthcare with the Department of Pharmacy, Swedish healthcare professionals, and the Swedish Medical Products Agency.</li> <li>ERI have co-led the development of a <b>One Health Strategy for the UHI</b>. The vision is to position the University of the Highlands and Islands (UHI) as a national and international leader in promoting the health and well-being of human, animal, and environmental systems in the Scottish Highlands and Islands, through a collaborative and interdisciplinary One Health approach.</li> <li>Neil James successfully designed/built/launched the new <b>ERI website</b>, which is now live! This platform enhances the visibility of ERI’s research activities, collaborations, and projects, providing a valuable resource for partners and the wider community.</li> <li>Stuart Gibb resigned as <b>Chair of the Flow Country Partnership</b> after having acted in that role for more than a decade including supporting £10M Flows to the Future Project, and nomination for the Flow Country as a UNESCO World Heritage site.</li> </ul>	
Current major projects initiatives (select; with partners + funders) – examples	
<ul style="list-style-type: none"> <li>Lydia Niemi, Neil James and Stuart Gibb submitted a grant application to the Scottish Government Water Industry Division to support continued coordination and KE activity of the One Health Breakthrough Partnership (with NHS Highland, SEPA, Scottish Water, and the Centre of Expertise for Waters)</li> <li>Stuart Gibb, Stephanie Strother, and Debbie Miller successfully secured funding to coordinate a multi-stakeholder task force over the next 2 years to explore the establishment of an <b>Innovation Centre in the North Highlands</b>. The centre would aim to be a transformative force—driving economic growth, fostering sustainable development, enhancing education, and positioning the region as a leader in innovation.</li> </ul>	

<b>Theme</b>	● Education
<b>Highlights</b>	
•	
<b>Current major projects initiatives (select; with partners + funders) – examples</b>	
•	

<b>Theme</b>	● Other
<b>Highlights</b>	
•	
<b>Current major projects initiatives (select; with partners + funders) – examples</b>	
•	



# OUTPUTS

## All themes

<ul style="list-style-type: none"> <li>Peer-reviewed publications</li> </ul> <b>Citation with NWH authors in bold</b>	Journal Impact Factor
Serena Rosignoli, Masami Inaba, Matthias Schmid, Marcus McHale, Antoine Fort, Maeve D. Edwards, Agnes Mols Mortensen, <b>Roy Bartle</b> , Arild Endal, Aurélien Baud, Christine Maggs, Ronan Sulpice. "Draft genome of <i>Palmaria palmata</i> and intraspecific genetic variations in the North-East Atlantic", <i>Algal Research</i> , Volume 86, 2025, 103887, ISSN 2211-9264, <a href="https://doi.org/10.1016/j.algal.2024.103887">https://doi.org/10.1016/j.algal.2024.103887</a> .	4.6
Bohnet, I.C., Bryce, R., Måren, I.E., Barraclough, A.D., Malcolm, Z., Külm, S., Kokovkin, T., <b>Taylor, S.</b> , Cudlinova, E. & Sepp, K. (2025) Co-creating cultural narratives for sustainable rural development: a transdisciplinary learning framework for guiding place-based social-ecological research, <i>Current Opinion in Environmental Sustainability</i> , Volume 73,101506.	6.6
<b>Niemi L.</b> , Anderson C., Arakawa, N, <b>Taggart M.</b> , <b>Gibb S.</b> , Pfleger S. Do you think medicines can be prescribed in a more eco-directed, greener way? A qualitative study based on public and prescriber focus groups on the impact of pharmaceuticals in Scotland's water environment. <i>BMJ Open</i> , 2025;15:e088066. doi: 10.1136/bmjopen-2024-088066	3.5
<b>Masden, E.A.</b> , Cook, A.S.C.P., Humphreys, E.M., Pearce-Higgins, J.W., 2025. Cumulative barriers to renewable energy development: Can we adjust our perspective and approach to benefit biodiversity? <i>Ecological Solutions and Evidence</i> 6, e70010. <a href="https://doi.org/10.1002/2688-8319.70010">https://doi.org/10.1002/2688-8319.70010</a>	
<b>McHenry, R.</b> , Mitchell, L.J., Marshall, C., Smart, J., de Raad, A.L. and <b>Andersen, R.</b> (2025), Fox on the Run—Cheaper Camera Traps Fail to Detect Fast-Moving Mesopredators. <i>Ecol Evol</i> , 15: e70958. <a href="https://doi.org/10.1002/ece3.70958">https://doi.org/10.1002/ece3.70958</a>	
Iverson, K., Little, K., Orpin, A., Lewis, C.H.M., Dyer, N., Keyzor, L., Everett, L., Stoll, E., <b>Andersen, R.</b> , Graham, L.J. and Kettridge, N., 2024. A national-scale sampled temperate fuel moisture database. <i>Scientific Data</i> , 11(1), p.973.	
Mitchell E.G, Dryden I.L., Fallaize, C.J., <b>Andersen, R.</b> , Bradley AV, Large DJ, Sowter A, Object oriented data analysis of surface motion time series in peatland landscapes, <i>Journal of the Royal Statistical Society Series C: Applied Statistics</i> , 2024;, qlae060, <a href="https://doi.org/10.1093/jrssc/qlae060">https://doi.org/10.1093/jrssc/qlae060</a>	
Fox, A. D., Frankard, P., Lindén, A., Seimola, T., <b>Hughes, R.</b> , & Leivits, M. (2025). Can Water Table Restoration in Drained Peatlands Contribute to Improving the Population Status of Eurasian Teal <i>Anas Crecca</i> ? <i>Mires and Peat</i> , 32, 03. <a href="https://doi.org/10.19189/001c.129782">https://doi.org/10.19189/001c.129782</a>	
<b>Goddijn-Murphy, L.M.</b> , Woolf, D., <b>James, N.A.</b> (2025) Patterns and trends in marine microplastics density distributions using a long-term, global, field database. <i>Marine Pollution Bulletin</i> , Volume 212, 117528. <a href="https://doi.org/10.1016/j.marpolbul.2025.117528">https://doi.org/10.1016/j.marpolbul.2025.117528</a> .	5.3
Cojbasic, S., Agarski, B., Vukelic, D., Sekulic, M.T., <b>Pap, S.</b> , Perovic, M., Prodanovic, J., 2025. Life cycle assessment of nature-based coagulant production: Light and dark sides of the freeze-drying process. <i>Industrial Crops and Products</i> , 226, p.120699. <a href="https://doi.org/10.1016/j.indcrop.2025.120699">https://doi.org/10.1016/j.indcrop.2025.120699</a>	5.6
Green, R.E., <b>Taggart, M.A.</b> , Pain, D.J., <b>Cakin, I.</b> , Clark, N.A., Cromie, R., Greenwood, L., <b>Guin, M.</b> , Porter, R., Smith, K.W., Smith, L., Wilson, J.D., 2025. Sampling red grouse carcasses in Britain indicates no progress during an intended five-year voluntary transition from lead to	

non-lead shotgun ammunition. Conservation Evidence 22, 9-15. <a href="https://conservationevidencejournal.com/reference/pdf/12814">https://conservationevidencejournal.com/reference/pdf/12814</a>	
Green, R.E., <b>Taggart, M.A.</b> , Pain, D.J., Clark, N.A., Cromie, R., Dodd, S.G., Elliot, B., Green, R.M.W., Greenwood, L., Huntley, B., Leslie, R., Porter, R., Price, M., <b>Roberts, J.</b> , Robinson, R.A., Smith, K.W., Smith, L., Spencer, J., Stroud, D., <b>Thompson, T.</b> , 2025. The proportion of common pheasants shot using lead shotgun ammunition in Britain has barely changed over five years of voluntary efforts to switch from lead to non-lead ammunition. Conservation Evidence 22, 18-25. <a href="https://conservationevidencejournal.com/reference/pdf/12816">https://conservationevidencejournal.com/reference/pdf/12816</a>	
<b>Cakin, I.</b> , Marcello, L., Morrissey, B., <b>Gaffney, P.P.J.</b> , <b>Taggart, M.A.</b> , 2025. Long-term monitoring of constructed wetlands in distilleries in Scotland - Evaluating treatment performance and seasonal microbial dynamics. Journal of Environmental Management 275, 124279. <a href="https://doi.org/10.1016/j.jenvman.2025.124279">https://doi.org/10.1016/j.jenvman.2025.124279</a>	<b>7.9</b>

<ul style="list-style-type: none"> <li>Book chapters</li> </ul>	
Farkić, J., & <b>Taylor, S.</b> (2025). Sustainable adventure tourism products and destinations. In G. Pomfret, A. Doran, & C. Cater (Eds.), <i>Routledge International Handbook of Adventure Tourism</i> . Routledge, 9781032316925.	
<b>Groves, M.</b> , <b>Griffiths, T.</b> , & <b>White, P.</b> (2025). The adventure tourism professional: Becoming and being the guide. <i>Routledge International Handbook of Adventure Tourism</i> . In G. Pomfret, A. Doran, & C. Cater (Eds.), <i>Routledge International Handbook of Adventure Tourism</i> . Routledge, 9781032316925.	

<ul style="list-style-type: none"> <li>Conference/event presentations</li> </ul>	<b>Poster / podium / invited</b>
<b>Lydia Niemi</b> co-delivered a webinar “Pharmaceuticals in the environment: Working together to address the issue in Scotland” under the “Environmental and Sustainable Prescribing” session for NHS Scotland’s annual CPD webinar week	Invited
<b>Szabolcs Pap</b> presented within the SAGES podcast series - about Innovation in Water Treatment – the podcast series went public in January 2025.	Invited
<b>Szabolcs Pap</b> participated in EBNet’s “Biochar Working Group” workshop – on “Thermal and bioprocessing conversion technologies”, in London, 25-26 <sup>th</sup> Feb 25.	Invited
<b>Szabolcs Pap</b> gave an invited lecture at the Scottish Forestry webinar entitled “Potential use of Biochar in Forestry” on the 27 <sup>th</sup> of Feb 2025.	Invited
Stuart Gibb presented the opening invited keynote on ‘One Health’ featuring Human pharmaceuticals in the environment the UHI Research Conference in Inverness in January	

- Media coverage

#### RSPB Scotland Awards

- [‘Nature and climate’ recognition for Flow Country Partnership at RSPB Scotland awards](#)
- [News - Flow Country Partnership win at RSPB Scotland’s Nature of Scotland Awards 2024](#)

#### PhD Student Story

- [UHI student pursues PhD while living with a brain tumour](#)
- [News - Research and Resilience: Pursuing a PhD while living with a brain tumour](#)

#### Flow Country

- [A Celebration of Life and Landscape in The Flow Country - The Highland Times](#)

#### Dr Szabolcs Pap - Climate Science Podcast

- [News - Scottish scientists lead climate change discussion in new podcast: UHI expert discusses technology and innovation in treating pollution](#)

#### Dr Mark Taggart – Lead ammunition phase out

- <https://www.theguardian.com/environment/2025/mar/06/lead-uk-game-shooting-study>
- <https://www.cam.ac.uk/research/news/pledge-to-phase-out-toxic-lead-ammunition-in-uk-hunting-by-2025-has-failed>
- <https://scienmag.com/uks-commitment-to-eliminate-toxic-lead-ammunition-in-hunting-by-2025-falls-short/>
- <https://www.msn.com/en-gb/news/world/promise-to-phase-out-lead-from-uk-game-shooting-has-failed-study-finds/ar-AA1AIJLx>
- <https://www.nwh.uhi.ac.uk/en/news/pledge-to-phase-out-toxic-lead-ammunition-in-uk-hunting-by-2025-has-failed.html>

#### UHI Staff and Student Research Conference

- PhD student, Amy Jones, won first prize with her poster titled ‘Radar remote sensing: where seabird habitat mapping meets tidal hydrodynamic associations’: [University of the Highlands and Islands \(UHI\) kickstart 2025 with ‘motivating and inspiring’ staff and student research conference](#)
- [Media - News - UHI staff and student research conference a resounding success](#)

## STAFF AND PGR STUDENTS

---

- Staffing

From staff survey for AY 23-24. Census date 1 August 2024

Research active (by definition provided below): 22

REF 2021 submission: Headcount / FTE: 14 / 12.4

Staff on research contracts pending

Location	Research active
'North'	16
'West'	3
'Hebrides'	3
<b>Total</b>	<b>22</b>

Research Theme	Research Active (primary interest)
Pollution	5
Energy	5
Peatlands	3
Society	2
Tourism	3
Other	4
<b>Total</b>	<b>22</b>

A "Research Active" individual is a colleague who pursues research on an ongoing basis, as a significant part of their academic activity'. This is indicated by: 1. Evidence of at least one research-driven peer-reviewed publication in the last 24 months. These could include Peer-reviewed journal articles, Refereed Book Chapters, etc.

AND

2 a. Supervision of postgraduate research students either as the main supervisor (DoS) or other named supervisor within the last 24 months. AND/OR

b. Evidence of applications to external agencies for funding as a PI or co-applicant for research and KE projects within the last 24 months (this does not include travel grants from the University).

- Postgraduate Students  
(to be updated by Directors of Studies)

	30 November 2024	28 February 2025	31 May 2025
Postgraduate Research Student numbers (PGR, at time of report)	12	13	
PGR completed in 24-25	2	2	

Degree	Funder	Start date	End Date	Status	DoS	Additional NWH Supervisors
PhD	SSER/RS PB	01/09/2022	31/08/2025	Ongoing	Roxane Andersen	Lucy Mitchell, Chris Marshall
PhD	MASTS SUPER DTP	01/10/2019	31/03/2024	complete	Roxane Andersen	Paul Gaffney
PhD	MASTS SUPER DTP	01/10/2020	31/03/2024	Ongoing	Benjamin Williamson	
PhD	MASTS SUPER DTP	01/10/2020	31/09/2024	Ongoing	Peter Gilbert	Roxane Andersen
PhD	Lever- hulme	06/09/2021	05/03/2025	Ongoing	Roxane Andersen	Mascha Bischoff
PhD	Lever- hulme	06/09/2022	05/03/2025	Ongoing	Roxane Andersen	
PhD	Lever- hulme	13/09/2021	12/03/2025	Ongoing	Chris Marhsall	Roxane Andersen
PhD	Hydro- Nation	01/10/2021	30/09/2025	Ongoing	Mark Taggart	Paul Gaffney
PhD	RSPB	02/02/2022	01/09/2026	Ongoing	Roxane Andersen	
PhD	MASTS SUPER DTP	01/09/2022	31/03/2026	ongoing	Benjamin Williamson	
PhD	Self- funded	01/11/2021	31/10/2024	Ongoing	Steve Taylor	Michelle Smith
PhD	UHI	01/02/2024	31/07/2028	ongoing	Benjamin Williamson	Jason McIlvenny, Lucy Mitchell
PhD	ETP/UHI	01/03/2024	31/07/2027	ongoing	Benjamin Williamson	
ADD others						

- Visiting staff and placement students

Name	Staff / student	Home country/ organisation  (Programme if applicable)	Dates  (Length of visit/ placement)	Project title	NWH Theme
<b>Recently completed /current</b>					
Maria Lach-Gar	Student	France	10.02.2025. 05.08.2025.	COOP - Green Shoots from Blue Growth – creating blue/green circularity	Pollution
Marlene Mellwig	Student	Germany	15/08/2024- 06/12/2024	Effects of drainage and wildfire on micro-invertebrate community in peatland	Peatland

## RESEARCH AND KE FUNDING APPLICATIONS

---

A summary of the applications contributing to the NWH Research and KE ‘pipeline’ is provided in the table below.

**Please note:**

- New proposals submitted within this reporting period (December 2024 to February 2025) are shown in lines 468 onwards
- The status of pending proposals is ‘dynamic’, but the table reflected the position as of 28/02/2025
- Proposals under negotiation, or subject to resubmission, may be subject to changes in value
- Where ‘Total Value’ is highlighted in text this refers to the overall total project award which will be held by lead partner. Potential income to NWH is highlighted in the table below
- Proposals submitted of value less than £5k are not included
- Intervention rates vary per project, as does the monthly euro conversion rate used by EU Projects

In the meantime, we continue to explore new funding opportunities, including those in partnership with external universities, research institutions, businesses, and stakeholders.

**General comments**

- Outline proposals which are under development or at stage one (expression of interest) are shown on the pipeline where the Advanced Notification Forms (ANF) have been submitted to ELT for approval based on estimated income. The pipeline will be updated should applicants be invited to submit full proposals.

EOI Number	proposal/theme		overall project value	NWH component	% likelihood of success	Duration (months)	Funder	% FY 24_25	%FY 25_26	Status
<b>applications submitted Sep to Nov 2023</b>										
		<b>ER/NWH</b>								
406	Offshore Ocean Wind Demonstrator	ENERGY	250,000	250,000	50	24	industry			under development
407	Mountain Epistemes and Justice	TOURISM	600,000	45,000	10	36	AHRC	33	33	secured
408	Healthy Young minds	TOURISM	80,000	5,000	25	18	public health intervention	25	50	secured
<b>applications submitted Dec 2023 to Feb 2024</b>										
		<b>NWH</b>								
413	review of wildfire risk	PEATLANDS	16,000	16,000		6	SSER			complete
414	EU_Be_SMART	PEATLANDS	7,500,000	560,000			Horizon Europe_biodiversity			unsuccessful
415	Corpach Marina	TOURISM	14,000	10,000		3	innovation voucher			complete
<b>applications submitted March to May 2024</b>										
		<b>NWH</b>								
422	Multiple stressors on wildfowl PhD	ENERGY	110,000	91,700	10	44	ECOWILD CDT	33	33	secured
425	adventure activities Glencoe_Tourism	TOURISM	14,000	7,000			UIF/UHI			complete
429	OHBP phase 3	SOCIETY	74,000	74,000	50	11	Scottish Government	100		secured
430	remote tracking of seabirds phase 2	ENERGY	3,000,000	30,000	50	18	OWEC/crown estate	20	80	secured
431	Western Edge	TOURISM	17,460	8,900		3	Innovation voucher			complete
432	Phosphorus speciation_biochar	POLLUTION	19,000	12,500		3	IBioIC			complete
433	tourism in Glenurquhart	TOURISM	18,000	5,700	50	5	Innovation voucher	100		secured
434	Learning from Island Communities	EDUCATION	300,000	25,000			AHRC			unsuccessful
435	Resilient Tourism in Europe	TOURISM	180,000	13,500	25	24	Dutch SIA	25	50	secured
436	Anti microbial resistance in rural waters	SOCIETY	4,000,000	400,000			Peaceplus			unsuccessful
437	Connect4Flow	ENERGY	2,000,000	218,000	25	48	UK RI ECOFLOW		25	awaiting outcome
438	Ecosystem change	ENERGY	2,950,000	550,000	25	48	UK RI ECOFLOW		25	secured
<b>Applications submitted June to August 2024</b>										
		<b>NWH</b>								
439	Monitoring healthy ecosystems	PEATLANDS	72,000	30,000			CREW			unsuccessful
440	Adapting outer Hebrides_climate	ENERGY	2,000,000	400,000	10	30	UK RI/DEFRA	20	40	awaiting outcome
441	KTP EMEC	ENERGY	305,250	255,000	50	36	Innovate UK		40	secured
442	Mercury, Peatlands and Climate change	PEATLANDS	1,000,000	250,000	10	48	NERC Pushing Frontiers		25	awaiting outcome
443	Co Pyrolysis for Sewage Sludge_network	POLLUTION	5,000	5,000			Royal Society of Chemistry			unsuccessful
444	tracking top predators_SUPER PhD	ENERGY	80,000	80,000			MASTS SUPER 2			unsuccessful
445	LOCII NH Innovation centre scoping	SOCIETY	100,000	97,000	25	12	NDA group	50	50	secured
<b>Applications submitted September to November 2024</b>										
446	Bridging Waters_Scotland -Sweden	SOCIETY	31,130	18,428	25	4	Scottish Government	100		secured
447	Clean CHAR_fellowship	POLLUTION	2,000,000	1,500,000	10	60	EPSRC Open Fellowship		20	awaiting outcome
448	Bryden 2 Marine Sensing PhD	ENERGY	165,000	165,000	25	42	Peaceplus		25	awaiting outcome
449	Dyke river salmon	PEATLANDS	30,000	30,000	50	12	NatureScot Peatland Action	30	70	awaiting outcome
450	Sustainable Medicine Use	POLLUTION	600,000	48,000	10	48	COST EU		25	awaiting outcome
451	Validating monitoring systems	ENERGY	125,000	97,000	25	12	SUPERGEN Flexfund	25	75	secured
452	Virtual Connections	TOURISM	20,000	20,000			National Lottery			unsuccessful
453	Sustainable Tourism_GURCA	TOURISM	18,000	9,000	50	6	Interface IV	100		awaiting outcome
454	PhRESH water_pharma reduction	SOCIETY	960,000	560,000	10	24	UK RI cross council		25	first stage
455	Explore Lochaber	TOURISM	95,590	70,590			SSE			unsuccessful
456	CO_IMPACT climate resilience	SOCIETY	70,000	65,000			SSE			unsuccessful
457	On the map_NLCA	TOURISM	14,000	7,000	50	6	Interface IV	100		secured
458	Value of marine structures	ENERGY	5,600,000	475,000	10	48	UK RI_Artificial Structures		25	awaiting outcome
459	Geophysics in mapping peatlands	PEATLANDS	400,000	400,000	50	36	TOTAL		33	secured
460	Biochar chasing sustainability	POLLUTION	3,000,000	2,000,000	10	120	RAENG Green Futures		10	awaiting outcome
461	PharmaCal	POLLUTION	1,200,000	250,000	10	24	UK RI cross council		25	awaiting outcome
462	ROBINSv2	ENERGY	500,000	50,000	10	24	UK RI cross council		25	awaiting outcome
463	Plastic flow_peatland	PEATLANDS	950,000	300,000	25	36	NERC Pushing Frontiers		33	awaiting outcome
464	Astronomy in Kenya	OTHER	100,000	15,800	50	5	DSIT	100		secured
465	GenMed	POLLUTION	2,000,000	13,000	10	48	UK RI applied global health		25	first stage
466	KTP_RWE_peatlands	PEATLANDS	264,180	209,782	50	24	UK RI Innovate UK		50	secured
467	Ruswood water quality	POLLUTION	9,500	9,500	50	4	Interface IV	100		awaiting outcome
<b>Applications submitted December 2024 to February 2025</b>										
468	Pathways to sustainable OW	ENERGY	4,500,000	320,000	10	42	Horizon Europe_CL5		25	awaiting outcome
469	OHBP continuation	SOCIETY/Pollution	74,000	74,000	50	12	Scottish Government		100	awaiting outcome
470	Value of marine structures_SAMS	ENERGY	5,600,000	120,000	10	48	UK RI Artificial Structures		25	awaiting outcome
471	Chemicals in Biosolids_PhD	POLLUTION	100,000	100,000	10	42	UHI_Scottish Water		25	awaiting outcome
472	Peatland condition_Shetland InSAR	PEATLANDS	80,000	17,080	50	12	industry		100	awaiting outcome
473	Dementia and Care Farms	TOURISM	9,990	310	25	9	Centre for Rural Health		100	awaiting outcome
474	Large Heath Butterfly & Peatlands	PEATLANDS	30,000	15,000	50	42	NatureScot Peatland Action		25	awaiting outcome
NB* Intervention rates vary e.g. NERC 80% . The budget shown is the total for the project										
NB**gaps in sequence indicate where unsuccessful proposals were shown on previous update										
Projects completed / income received in FY23_24 are marked as complete										