

ERI's 'POLLUTION' R&KE THEME (WHO?)

Mark Taggart (SRF)

Szabolcs Pap (RF)

Neil James (RF)

Lydia Niemi (Post-Doc)

Stephanie Griffiths (PhD - ERI)

Maider Guiu (Chemist)

Jade Roberts (Lab Tech)

Michael Sinclair (Lab Tech)

Thomas Thompson (Lab Tech)

Paul Gaffney (ERI Associate - CHINA)

Anna McWilliam (PhD - ERI)

Ilgaz Gakin (PhD - ERI) – just completed

Manuel-Thomas Valdivia (PhD – UHI Inv)

Laura Kamp (PhD – St Andrews)

Isabella Jackson (PhD - HWU)

ADVERTISING 1 (PhD – ERI)

CURRENT FOCUS AREAS



ENV CHEMISTRY
ECOTOXICOLOGY

Mark Taggart (SRF)



Szabolcs Pap (RF)

Neil James (RF)

Lydia Niemi (Post-Doc)

WASTEWATER TREATMENT



RESOURCE RECOVERY

Maider Guiu (Chemist)

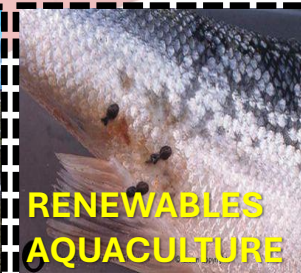
Jade Roberts (Lab Tech)

Michael Sinclair (Lab Tech)

Thomas Thompson (Lab Tech)



COMMERCIAL SERVICES
~£100K-£150K/year



RENEWABLES
AQUACULTURE

PLASTICS



REF 2029
Research Excellence Framework

PHARMACEUTICALS

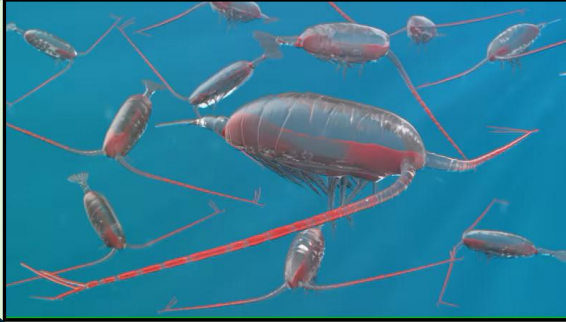
~17% ↑ annually
last 3 years.

“Understanding environmental contamination and developing sustainable solutions”

OTHER FUTURE DIRECTIONS (2025+)



- Wildlife forensics – “beaver biomonitoring tool” (PhD)
- Socio-cultural implications of vulture declines (Asia)
- Fate/impacts of ‘anti-parasitic’ compounds in uplands



UKRI – cross-cutting (~£1.2M each) projects (in submission)

1. “**PhRESHWater**: Pharmaceutical Reduction in our Environment through Sustainable Healthcare”
2. “*Calanus* as vectors of pharmaceuticals and contaminants in the marine environment: **PharmaCal**”



Szabolcs Pap submitted 10yr “Green Future Fellowship” to RAE + a 5yr Fellowship to EPSRC (~£2.2M value).
“Chasing sustainability and net zero in the water sector: Processing biosolids into biochar (**CassioPeia**)”.



2 Post-Docs
2 PhD's

New Group

Spin-OUT in “sustainable
wastewater treatment”

